



THE LODGE

Issue 38 ... Dec 2019

Message from the Head



As the nights continue to draw in and the year comes to an end, I look back and reflect on 2019 as one of the most challenging years for the school.

The impact of the schools reorganisation to meet predicted financial pressures has left a bitter sweet trail across all areas of the school. The future however has a very different feel as we begin to look at how we can grow our provisions with the support of both the Local Authority and the Academy Trust that we plan to join.

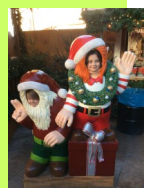
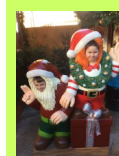
On another huge positive, the students have continued to be their brilliant selves and have achieved some of our best outcomes in National tests, and have sustained the highest levels of attendance to date, despite the unfortunate waves of sickness that seemed to have marred the last half term.

As you are aware the Academy conversion consultation ended on the 13th December. Feedback received will be taken into consideration by Governors before they make the final decision to convert. If all goes well we will be joining The Manor Hall Academy Trust on 1st April 2020 and we will be looking forward to putting into place a growth plan which will see our student numbers rise across both sites.

We wish you well over the Christmas break and hope that the New Year brings you prosperity and happiness.

GERMAN MARKET VISIT

To coincide with our Geography topic, children in Unicorn and Athos classes had the opportunity to visit the German Christmas Market in Birmingham on 3rd December. We took the journey into Birmingham on the train, which the children (and staff) really enjoyed. The children enjoyed walking around the German market, views from the top of Birmingham library, a ride on the carousel and a very non German chicken nugget lunch before heading back. Lexie said "it was a really fun day, especially when I got to eat the chicken nuggets!"



Shenstone New Build



Those of you that have visited the Shenstone Lodge site over the last few months will have seen the new classroom block slowly emerging from behind the safety fencing adjacent to the existing school building. We are now pleased to announce that we now have two new bright and airy classroom spaces, suitable for a total of 16 students. We have already allocated the rooms to classes that are currently



in spaces that are too small for groups of this size. As a result, Centaur and Athos classes are really excited about occupying their new rooms.

Kieran said "Its great .. There's loads of room to play twister!"



SPORTS NEWS

Shenstone Lodge FC have played a few games this term against local rivals Lichfield Cathedral School and Northern House Solihull. The match against Lichfield Cathedral was a primary



schools league game which unfortunately ended in a 3-1 loss. The effort and team spirit, however, was great throughout with a lovely goal scored by Ibrahim. The pupils have been working well with staff and taking up extra training sessions with the view to kicking off the new year with more games and more goals. Mr Albright (Team Coach)



Reflections from Religious Education Focus Week

As Christians across the world prepare for one of their biggest days of the year, students at The Brades Lodge have been spending time looking at other religions and cultures, considering similarities and differences between them. As part of their studies some of the Year 7 and 8 pupils visited the Central Synagogue in Birmingham.



They enjoyed a tour of the synagogue and were fascinated when told about Judaism and Jewish beliefs and traditions. The students behaved with the utmost respect during the visit, donning the traditional 'kippah' whilst in the building. Sarah Yates

As part of the schools drive to continually engage with parents and meet the criteria for the Leading Parent Partnership Award, The Brades Lodge held a bigger than ever termly Parental Engagement Day. The theme of the day was 'Supporting Your Child' with parents and carers having the opportunity to speak with key staff regarding their child's progress and attainment and to speak to other service professionals from Oldbury COG, Decca, Citizens Advice, Sandwell MBC- Housing; and S Worton regarding Careers and Post 16 options. Thanks to all those who were able to attend. If you would like to know more about the award and get involved please contact Dee Hart (Head of Care) denise.hart@shenstonelodge.co.uk or call the Shenstone Lodge Site.



RESIDENTIAL HIGHLIGHTS

The residential team continue to inspire adventure into the evenings - the dark, the cold and the rain has not stopped them. We have seen children challenge themselves to think and do things differently, showing respect and tolerance both in and out of school. Tobogganing at the snowdome and trips to the German Market, Kingsbury water park, the National War Memorial, and other venues have been a great vehicle to promote core personal qualities.

We hope your festive season is filled with happiness and fun, and we are looking forward to seeing everyone back in the new year.

Dave Hare RCCO and Dee Hart (HOC)



SAT results and Y11 Outcomes

Every year the school needs to publish the results achieved by students at the end of the primary and secondary phases on completion of national tests and accreditations.

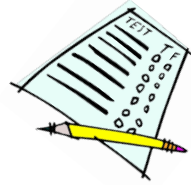
Well Done to all who have taken part !

Y6 SAT results

Percentage of students achieving expected standard

English Reading 25% English Writing 0%

Grammar, Punctuation and Spelling 17% Maths 20%



KS4 Outcomes

Number on roll KS4 (Year 11)	2019	
	5	
Attainment Threshold Measures	Number Achieving	% of NOR Achieving
English Pass - GCSE (grades 1-9)	3	60.0
English Pass - Entry Level	3	60.0
English Pass - Any Other qualification		0.0
Maths Pass - GCSE (grades 1-9)	2	40.0
Maths Pass - Entry Level	5	100.0
Maths Pass - Any Other qualification		0.0
4 or more qualifications at any level	3	60.0
1 or more qualification at any level	5	100.0

Christmas Quiz Corner



1. Which country exports the highest number of Christmas trees ?
2. Where would you find mistletoe growing ?
3. How did Boxing Day get its name ?
4. What is frankincense and myrrh ?
5. How many different meanings can you find for the word 'present' ?

TRANSPORT PILOT

As a follow up to the letter sent out to parents and carers a couple of weeks ago, I am keen to promote the opportunity for those of you who :

1. Have your own transport available
2. Are willing and able to transport your child to and from school
3. Have a child that is currently using a **Local Authority** funded taxi.



If this applies to you, the Local Authority are willing to pay you 45p per mile (school and back twice a day) as long as your child is dropped off and picked up on time. Monies paid will not affect any benefit income. If you are interested in knowing more about the scheme or want to sign up, please contact the school and ask to talk to Simon Hobbs.

Well Done...



To Theo, Leo, Charlie, Omar, Callum and Aadam for receiving the most positive report slips at The Brades Lodge this half term.

To Kyle CH, Findlay, Aadam, and Kai who have 100% attendance this half term at The Brades Lodge.

To Celest, Luke O, Kyle, Billy and Brayden with the highest class Dojos this half term.

To Billy, Ricardo, Jayden B, Lexie, Caiden, Mia-Louise, Ethan D, Ibby, Junior, Malachi, Ethan C, Jake A, Riley, Kieron, Kyle, Celest, Jordan, Bailey, Dwain, Romero, Charlotte, Joshua, Curtis, Xavier, Jake O, Shay and Michael who have 100% attendance at Shenstone Lodge this half term.

A Big Thank You !

On the 1st of December 1975 the top of the pops was Queens Bohemian Rhapsody, Derby County were at the top of Division 1, Harold Wilson was the prime minister and a spritely 17 year old Jane Pinches wandered through the doors at Shenstone Lodge School. Jane has been part of the school ever since and now, 44 years later she has decided to hang up her wellies, leaf blower and hedge trimmer to spend more time tending to her growing lamb holding. We will miss her !



Good To Know, Working with Families News

Sandwell Adult and Family Learning have a range of courses available for those looking to gain skills and knowledge in customer service, care, or Maths and English. enquiries_recruitment@sandwell.gov.uk

Join the **Think Local** teams on Facebook and please tell your families about the page too - for information about jobs, apprenticeships, events and much more. www.facebook.com/SandwellJobs
www.facebook.com/futureskillssandwell

A.O.B.

As a quick reminder please return you parent questionnaire if you haven't completed it at one of our parent engagement events. Your views are really important and help us to improve our school.

The cold weather is here and there have already been outbreaks of the norovirus. For more information on how to help protect against diarrhoea and vomiting please go to the NHS webpage <https://www.nhs.uk/conditions/norovirus/>

Diary Dates...

Xmas Break 23rd Dec-3rd Jan

1.30pm finish on 20th Dec

Half Term 17th -21st Feb

Easter Break 6th Apr-17th Apr

1.30pm finish on 3rd Apr

May Day FRIDAY 8th MaY

STAFF INSET 11th May

Half Term 25th May-29th May

School Data Box 2018/19

Below is a short summary of some of the key bits of information that we report on to Governors and the Local Authority.

Whole School Attendance for 2018/2019 : **84.1%**
2019 /20 school year to date : **85.8%**
(TBL 77.9% SLS 93.8%)

Whole School Sessions lost to Exclusion (1 day = 2 sessions)
2018/19 : **127** 2019/20 school year to date : **56**

ONLINE SAFETY MESSAGE

The NSPCC provides comprehensive internet safety advice and raise awareness around some of the social networking sites that children can have access to. Please visit :

<https://www.nspcc.org.uk/preventing-abuse/keeping-children-safe/online-safety/>



Whether you want to set up parental controls, adjust privacy settings or get advice on social networks, experts from the FREE O2 & NSPCC helpline are here to help. 0808 800 5002



Parent/Carer Questionnaire Dec 2019

Name of Student :

For each of the statements below, please tick the box which best reflects your views.

1 = don't know 2 = strongly disagree 3 = disagree 4 = agree 5 = strongly agree

Your support in completing and returning this questionnaire as soon as possible is very much appreciated as it assists us in identifying areas of strength or weakness and enables us to take measures to improve.

	1	2	3	4	5
1. My Child enjoys school					
2. The school keeps my child safe					
3. The school informs me about my child's progress					
4. My child is making enough progress at this school					
5. The teaching is good at this school					
6. Staff help my child improve their reading					
7. Staff help my child improve their writing					
8. Staff help my child improve my maths					
9. Staff help my child improve their computer skills					
10. The school helps me to support my child's learning					
11. The school helps my child to have a healthy lifestyle					
12. The school makes sure that my child is well prepared for the future					
13. The school meets my child's particular needs					
14. The school deals effectively with unacceptable behaviour					
15. The school takes account of my suggestions and concerns					
16. The school is led and managed effectively					
17. Overall, I am happy with my child's experience at this school					

If you have any further comments please write them here :